



Pathway to the Future

MEASURE L BOND UPDATE

December 10, 2019



Measure L – Overview

- Project Updates
- Program Schedule Review

Measure L – Project Updates

Cherrywood Elementary School - FIS

- In progress:
 - Elevator – State Inspection scheduled for December 19, 2019
 - Punch List

Measure L – Project Updates



Cherrywood FIS – Back

Measure L – Project Updates



Cherrywood FIS - Front

Measure L – Project Updates

Additional Projects

- Complete:
 - Traffic Gates - Phase 1 - BT, CW, NW, SD, VP, and MM
 - Portable Restroom Replacement @ Brooktree
 - Cherrywood Fencing
 - Majestic Way Gate Replacement
- In Construction:
 - Wireless thermostat's at portables
- In Design/Bidding:
 - Traffic Gates - Phase 2 – NB, PM, and SM
 - Perimeter Fencing
 - Laneview
 - Noble
 - Ruskin
 - Sierramont

Measure L – Project Updates

Additional Projects

- Design/Bidding:
 - Morrill – HVAC
 - Paving – Laneview Staff Parking Lot
 - Main Alarm Security Alarm Panels
 - Security Camera @ Middle Schools
 - Lunch Shade Structures
 - Noble
 - Ruskin
 - Morrill
 - Library Shelving
 - Music Room Furniture
 - Piedmont
 - Entry Canopy
 - Marquee
 - Lunch Shade Structure

Measure L – Project Updates



Cherrywood FIS – Fencing

Measure L – Project Updates



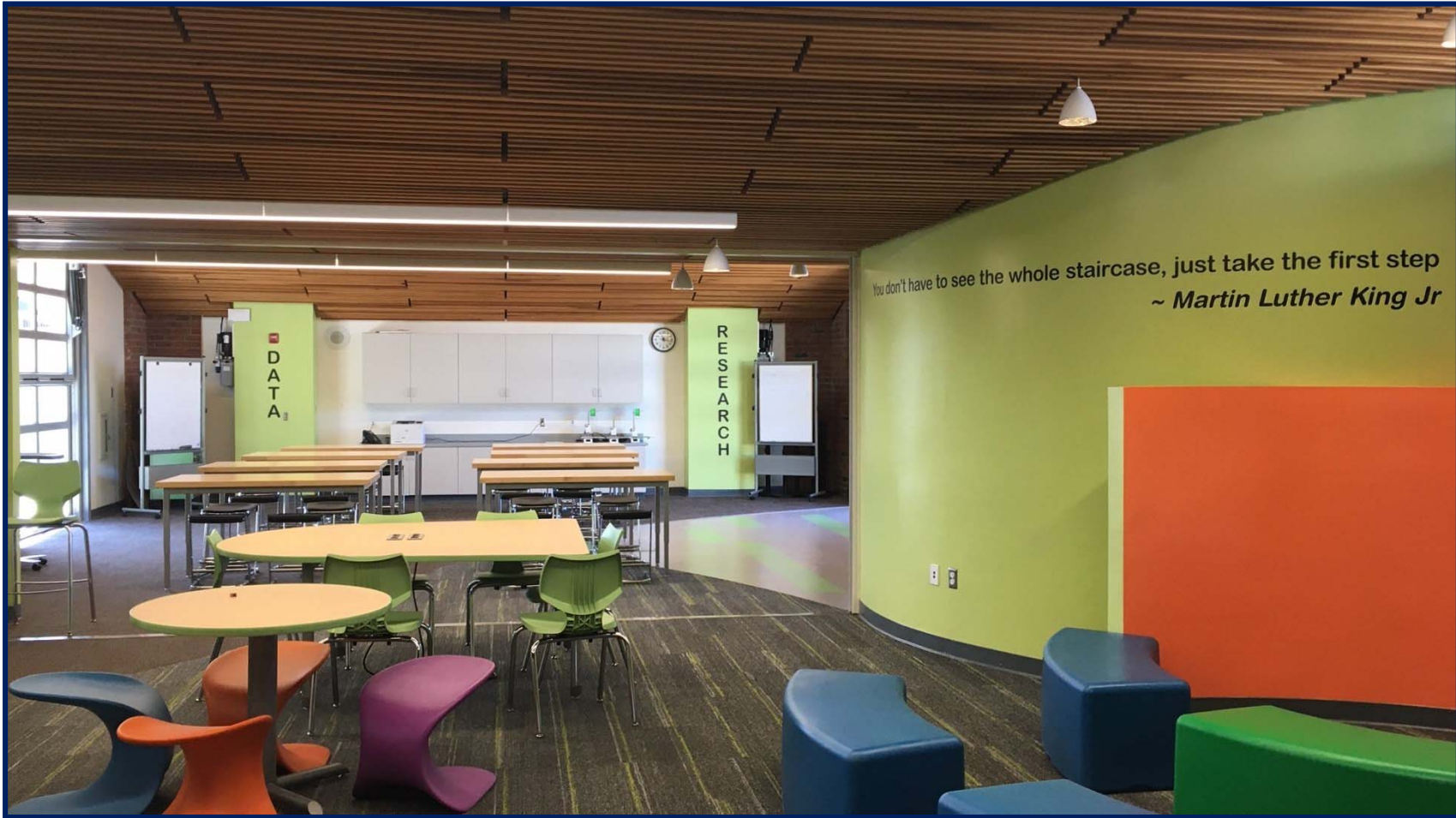
Cherrywood FIS – Fencing

Measure L – Project Updates



Toyon Elementary School – Concrete Work

Measure L – Project Updates



Noble FIS

Thank You

